

# **ab108805 – Human Apolipoprotein AII ELISA Kit (APOA2)**

## Instructions for Use

For the quantitative measurement of Human Apolipoprotein AII (APOA2) in plasma, serum, and cell culture, cell lysate and tissue samples.

This product is for research use only and is not intended for diagnostic use.

# Table of Contents

---

## INTRODUCTION

1. BACKGROUND	2
2. ASSAY SUMMARY	3
3. PRECAUTIONS	4

## GENERAL INFORMATION

4. STORAGE AND STABILITY	4
5. MATERIALS SUPPLIED	4
6. MATERIALS REQUIRED, NOT SUPPLIED	5
7. LIMITATIONS	5
8. TECHNICAL HINTS	6

## ASSAY PREPARATION

9. REAGENT PREPARATION	7
10. STANDARD PREPARATIONS	10
11. SAMPLE PREPARATION	13
12. PLATE PREPARATION	15

## ASSAY PROCEDURE

13. ASSAY PROCEDURE	16
---------------------	----

## DATA ANALYSIS

14. CALCULATIONS	18
15. TYPICAL DATA	19
16. TYPICAL SAMPLE VALUES	20
17. ASSAY SPECIFICITY	22

## RESOURCES

18. TROUBLESHOOTING	23
19. NOTES	25

## 1. BACKGROUND

Abcam's Human Apolipoprotein All (APOA2) *in vitro* ELISA (Enzyme-Linked Immunosorbent Assay) kit is designed for the quantitative measurement of apolipoprotein All concentrations in cell culture samples, serum, and plasma.

An Apolipoprotein All specific antibody has been precoated onto 96-well plates and blocked. Standards or test samples are added to the wells and subsequently an Apolipoprotein All specific biotinylated detection antibody is added and then followed by washing with wash buffer. Streptavidin-Peroxidase Complex is added and unbound conjugates are washed away with wash buffer. TMB is then used to visualize Streptavidin-Peroxidase enzymatic reaction. TMB is catalyzed by Streptavidin-Peroxidase to produce a blue color product that changes into yellow after adding acidic stop solution. The density of yellow coloration is directly proportional to the amount of Apolipoprotein All captured in plate.

Apolipoprotein All is the second most abundant apolipoproteins in Human plasma HDL, comprising about 25% of the protein mass. After being synthesized by the liver and intestine as a preprotein containing 100 amino acids, apolipoprotein All is processed to 77 amino acids in the mature plasma protein. Apolipoprotein All is found in plasma as a monomer, homodimer of 17.4 kDa, or heterodimer with apolipoprotein E and Apo D. It has been reported that Apolipoprotein All plays roles in HDL remodeling, cholesterol efflux, modulating HDL interaction with enzymes and receptors, triglyceride metabolism, and atherosclerosis. Apolipoprotein All is inversely associated with risk of future coronary artery disease. Serum levels of an isoform of apolipoprotein All have been identified as a potential marker for prostate cancer.

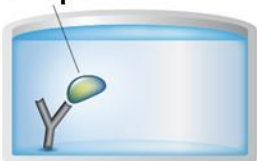
## 2. ASSAY SUMMARY

### Primary capture antibody



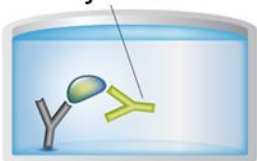
Prepare all reagents, samples and standards as instructed.

### Sample



Add standard or sample to each well used. Incubate at room temperature.

### Primary detector antibody



Wash and add prepared biotin antibody to each well. Incubate at room temperature.

### Streptavidin Label



Wash and add prepared Streptavidin-Peroxidase Conjugate. Incubate at room temperature.

### Substrate **Colored product**



Add Chromogen Substrate to each well. Incubate at room temperature. Add Stop Solution to each well. Read immediately.

## 3. PRECAUTIONS

**Please read these instructions carefully prior to beginning the assay.**

Modifications to the kit components or procedures may result in loss of performance.

## 4. STORAGE AND STABILITY

**Store kit at 4°C immediately upon receipt, apart from the SP Conjugate & Biotinylated Antibody, which should be stored at -20°C.**

Refer to list of materials supplied for storage conditions of individual components. Observe the storage conditions for individual prepared components in sections 9 & 10.

## 5. MATERIALS SUPPLIED

Item	Amount	Storage Condition (Before Preparation)
Apolipoprotein All Microplate (12 x 8 well strips)	96 wells	4°C
Apolipoprotein All Standard	2 vials	4°C
10X Diluent M Concentrate	30 mL	4°C
Biotinylated Human Apolipoprotein All Antibody	1 vial	-20°C
100X Streptavidin-Peroxidase Conjugate (SP Conjugate)	80 µL	-20°C
Chromogen Substrate	7 mL	4°C
Stop Solution	11 mL	4°C
20X Wash Buffer Concentrate	2 x 30 mL	4°C
Sealing Tapes	3	N/A

### **6. MATERIALS REQUIRED, NOT SUPPLIED**

These materials are not included in the kit, but will be required to successfully utilize this assay:

- 1 Microplate reader capable of measuring absorbance at 450 nm.
- Precision pipettes to deliver 1  $\mu$ L to 1 mL volumes.
- Adjustable 1-25 mL pipettes for reagent preparation.
- 100 mL and 1 liter graduated cylinders.
- Absorbent paper.
- Distilled or deionized water.
- Log-log graph paper or computer and software for ELISA data analysis.
- 7 tubes to prepare standard or sample dilutions.

### **7. LIMITATIONS**

- Do not mix or substitute reagents or materials from other kit lots or vendors.

### 8. TECHNICAL HINTS

- Samples generating values higher than the highest standard should be further diluted in the appropriate sample dilution buffers.
- Avoid foaming or bubbles when mixing or reconstituting components.
- Avoid cross contamination of samples or reagents by changing tips between sample, standard and reagent additions.
- Ensure plates are properly sealed or covered during incubation steps.
- Complete removal of all solutions and buffers during wash steps.
- **This kit is sold based on number of tests. A ‘test’ simply refers to a single assay well. The number of wells that contain sample, control or standard will vary by product. Review the protocol completely to confirm this kit meets your requirements. Please contact our Technical Support staff with any questions.**

## 9. REAGENT PREPARATION

Equilibrate all reagents to room temperature (18-25°C) prior to use. Prepare fresh reagents immediately prior to use. When diluting the concentrates, make sure to rinse the bottle thoroughly to extract any precipitates left in the bottle. Mix the 1x solution gently until the crystals have completely dissolved.

### 9.1 1X Diluent M

Dilute the 10X Diluent M Concentrate 1:10 with reagent grade water. Mix gently and thoroughly. *Store for up to 1 month at 4°C.*

### 9.2 1X Wash Buffer

Dilute the 20X Wash Buffer Concentrate 1:20 with reagent grade water. Mix gently and thoroughly.

### 9.3 1X SP Conjugate

Spin down the 100X Streptavidin-Peroxidase Conjugate (SP Conjugate) briefly and dilute the desired amount of the conjugate 1:100 with 1X Diluent M.

*Any remaining solution should be frozen at -20°C.*

### 9.4 1X Biotinylated Apolipoprotein All Detector Antibody

9.4.1 The stock Biotinylated Apolipoprotein All Antibody must be diluted with 1X Diluent M according to the label concentration to prepare 1X Biotinylated Apolipoprotein All Antibody for use in the assay procedure. Observe the label for the "X" concentration on the vial of Biotinylated Apolipoprotein All Antibody.

9.4.2 Calculate the necessary amount of 1X Diluent M to dilute the Biotinylated Apolipoprotein All Antibody to prepare a 1X Biotinylated Apolipoprotein All Antibody solution for use in the assay procedure according to how many wells you wish to use and the following calculation:



## ASSAY PREPARATION

Number of Wells Strips	Number of Wells	(V <sub>T</sub> ) Total Volume of 1X Biotinylated Antibody (μL)
4	32	1,760
6	48	2,640
8	64	3,520
10	80	4,400
12	96	5,280

*Any remaining solution should be frozen at -20°C.*

Where:

C<sub>S</sub> = Starting concentration (X) of stock Biotinylated Apolipoprotein All Antibody (variable)

C<sub>F</sub> = Final concentration (always = 1X) of 1X Biotinylated Apolipoprotein All Antibody solution for the assay procedure

V<sub>T</sub> = Total required volume of 1X Biotinylated Apolipoprotein All Antibody solution for the assay procedure

V<sub>A</sub> = Total volume of (X) stock Biotinylated Apolipoprotein All Antibody

V<sub>D</sub> = Total volume of 1X Diluent M required to dilute (X) stock Biotinylated Apolipoprotein All Antibody to prepare 1X Biotinylated Apolipoprotein All solution for assay procedures

Calculate the volume of (X) stock Biotinylated Antibody required for the given number of desired wells:

$$(C_F / C_S) \times V_T = V_A$$

Calculate the final volume of 1X Diluent M required to prepare the 1X Biotinylated Apolipoprotein All Antibody:

$$V_T - V_A = V_D$$

### Example:

**NOTE: This example is for demonstration purposes only. Please remember to check your antibody vial for the actual concentration of antibody provided.**

$C_S$  = 50X Biotinylated Apolipoprotein All Antibody stock

$C_F$  = 1X Biotinylated Apolipoprotein All Antibody solution for use in the assay procedure

$V_T$  = 3,520  $\mu$ L (8 well strips or 64 wells)

$$(1X/50X) \times 3,520 \mu\text{L} = 70.4 \mu\text{L}$$

$$3,520 \mu\text{L} - 70.4 \mu\text{L} = 3,449.6 \mu\text{L}$$

$V_A$  = 70.4  $\mu$ L total volume of (X) stock Biotinylated Apolipoprotein All Antibody required

$V_D$  = 3,449.6  $\mu$ L total volume of 1X Diluent M required to dilute the 50X stock Biotinylated Antibody to prepare 1X Biotinylated Apolipoprotein All Antibody solution for assay procedures

9.4.3 First spin the Biotinylated Apolipoprotein All Antibody vial to collect the contents at the bottom.

9.4.4 Add calculated amount  $V_A$  of stock Biotinylated Apolipoprotein All Antibody to the calculated amount  $V_D$  of 1X Diluent M. Mix gently and thoroughly.

### 9.5 1X SP Conjugate

Spin down the 100X Streptavidin-Peroxidase Conjugate (SP Conjugate) briefly and dilute the desired amount of the conjugate 1:100 with 1X Diluent M.

*Any remaining solution should be frozen at -20°C.*

## 10. STANDARD PREPARATIONS

- Prepare serially diluted standards immediately prior to use. Always prepare a fresh set of standards for every use.
- Any remaining standard should be stored at -20°C after reconstitution and used within 30 days.
- This procedure prepares sufficient standard dilutions for duplicate wells.

10.1 Reconstitution of the Apolipoprotein All Standard vial to prepare a 256 µg/mL Apolipoprotein All **Stock Standard**:

10.1.1 First consult the Apolipoprotein All Standard vial to determine the mass of protein in the vial.

10.1.2 Calculate the appropriate volume of 1X Diluent M to add when resuspending the Apolipoprotein All Standard vial to produce a 256 µg/mL Apolipoprotein All **Stock Standard** by using the following equation:

$C_S$  = Starting mass of Apolipoprotein All Standard (see vial label) (ng)

$C_F$  = 256 µg/mL Apolipoprotein All **Stock Standard** final required concentration

$V_D$  = Required volume of 1X Diluent M for reconstitution (µL)

Calculate total required volume 1X Diluent M for resuspension:

$$(C_S / C_F) \times 1,000 = V_D$$

## Example:

**NOTE: This example is for demonstration purposes only. Please remember to check your standard vial for the actual amount of standard provided.**

$C_S$  = 256 µg of Apolipoprotein All Standard in vial

$C_F$  = 256 µg/mL Apolipoprotein All **Stock Standard** final concentration

$V_D$  = Required volume of 1X Diluent M for reconstitution

$$(256 \mu\text{g} / 256 \mu\text{g/mL}) \times 1,000 = 1,000 \mu\text{L}$$

- 10.1.3 First briefly spin the Apolipoprotein All Standard Vial to collect the contents on the bottom of the tube.
- 10.1.4 Reconstitute the Apolipoprotein All Standard vial by adding the appropriate calculated amount  $V_D$  of 1X Diluent M to the vial to generate the 256 µg/mL Apolipoprotein All **Stock Standard**. Mix gently and thoroughly.
- 10.2 Allow the reconstituted 256 µg/mL Apolipoprotein All **Stock Standard** to sit for 10 minutes with gentle agitation prior to making subsequent dilutions
- 10.3 Label eight tubes #1-8.
- 10.4 Prepare the 32 µg/mL **Standard #1** by adding 100 µL of the reconstituted 256 µg/mL Apolipoprotein All **Stock Standard** to 700 µL of 1X Diluent M and mix thoroughly and gently.
- 10.5 Add 120 µL of 1X Diluent M to tubes #2 – 8.
- 10.6 To prepare **Standard #2**, add 120 µL of the **Standard #1** into tube #2 and mix gently.
- 10.7 To prepare **Standard #3**, add 120 µL of the **Standard #2** into tube #3 and mix gently.
- 10.8 Using the table below as a guide, prepare subsequent serial dilutions.
- 10.9 1X Diluent M serves as the zero standard, 0 ng/mL (tube #8).

**Standard Dilution Preparation Table**

Standard #	Volume to Dilute (μL)	Volume Diluent M (μL)	Total Volume (μL)	Starting Conc. (μg/mL)	Final Conc. (μg/mL)
1	Step 10.1				32
2	120	120	240	32	16
3	120	120	240	16	8
4	120	120	240	8	4
5	120	120	240	4	2
6	120	120	240	2	1
7	120	120	240	1	0.5
8	-	120	120	-	0

## 11. SAMPLE PREPARATION

### 11.1 Plasma

Collect plasma using one-tenth volume of 0.1 M sodium citrate as an anticoagulant. Centrifuge samples at 3,000 x *g* for 10 minutes and use supernatants. Dilute samples 1:80 with 1X Diluent M and assay. The undiluted samples can be stored at -20°C or below for up to 3 months. Avoid repeated freeze-thaw cycles. (EDTA or Heparin can also be used as an anticoagulant.).

### 11.2 Serum

Samples should be collected into a serum separator tube. After clot formation, centrifuge samples at 3,000 x *g* for 10 minutes and remove serum. Dilute samples 1:80 into 1X Diluent M and assay. The undiluted samples can be stored at -20°C or below for up to 3 months. Avoid repeated freeze-thaw cycles.

### 11.3 Cell Culture Media

Centrifuge cell culture media at 1,500 rpm for 10 minutes at 4°C to remove debris. Collect supernatants and assay. If necessary, dilute samples into Diluent M; user should determine optimal dilution factor depending on application needs. The undiluted sample samples can be stored at -80°C or below. Avoid repeated freeze-thaw cycles.

### 11.4 Cell Lysate

Rinse cell with cold PBS and then scrape the cell into a tube with 5 ml of cold PBS and 0.5 M EDTA. Centrifuge suspension at 1500 rpm for 10 minutes at 4°C and aspirate supernatant. Resuspend pellet in ice-cold Lysis Buffer (PBS, 1% Triton X-100, protease inhibitor cocktail). For every 1 x 10<sup>6</sup> cells, add approximately 100 µl of ice-cold Lysis Buffer. Incubate on ice for 60 minutes. Centrifuge at 13000 rpm for 30 minutes at 4°C and collect supernatant. If necessary, dilute samples into Diluent M; user should determine optimal dilution factor depending on application

needs. The undiluted samples can be stored at  $-80^{\circ}\text{C}$ . Avoid repeated freeze-thaw cycles.

### 11.5 Tissue

Extract tissue samples with 0.1 M phosphate-buffered saline (pH 7.4) containing 1% Triton X-100 and centrifuge at 14000 x g for 20 minutes. Collect the supernatant and measure the protein concentration. If necessary, dilute samples into EIA Diluent; user should determine optimal dilution factor depending on application needs. Store remaining extract at  $-80^{\circ}\text{C}$ . Avoid repeated freeze-thaw cycles.

## PLATE PREPARATION

- The 96 well plate strips included with this kit are supplied ready to use. It is not necessary to rinse the plate prior to adding reagents.
- Unused well plate strips should be returned to the plate packet and stored at  $4^{\circ}\text{C}$ .
- For statistical reasons, we recommend each sample should be assayed with a minimum of two replicates (duplicates).
- Well effects have not been observed with this assay. Contents of each well can be recorded on the template sheet included in the Resources section.

### **12. ASSAY PROCEDURE**

- **Equilibrate all materials and prepared reagents to room temperature (18 - 25°C) prior to use.**
  - **It is recommended to assay all standards, controls and samples in duplicate.**
- 13.1 Prepare all reagents, working standards and samples as instructed. Equilibrate reagents to room temperature before use. The assay is performed at room temperature (18-25°C).
  - 13.2 Remove excess microplate strips from the plate frame and return them immediately to the foil pouch with desiccant inside. Reseal the pouch securely to minimize exposure to water vapor and store in a vacuum desiccator.
  - 13.3 Add 50 µL of Apolipoprotein All Standard or sample per well. Gently tap plate to thoroughly coat the wells. Break any bubbles that may have formed. Cover wells with a sealing tape and incubate for two hours. Start the timer after the last sample addition.
  - 13.4 Wash five times with 200 µL of 1X Wash Buffer manually. Invert the plate each time and decant the contents; tap it 4-5 times on absorbent paper towel to completely remove the liquid. If using a machine wash six times with 300 µL of 1X Wash Buffer and then invert the plate, decant the contents; tap it 4-5 times on absorbent paper towel to completely remove the liquid.
  - 13.5 Add 50 µL of 1X Biotinylated Apolipoprotein All Antibody to each well. Gently tap plate to thoroughly coat the wells. Break any bubbles that may have formed. Cover wells with a sealing tape and incubate for one hour.
  - 13.6 Wash microplate as described above.
  - 13.7 Add 50 µL of 1X SP Conjugate to each well. Gently tap plate to thoroughly coat the wells. Break any bubbles that



may have formed. and incubate for 30 minutes. Turn on the microplate reader and set up the program in advance.

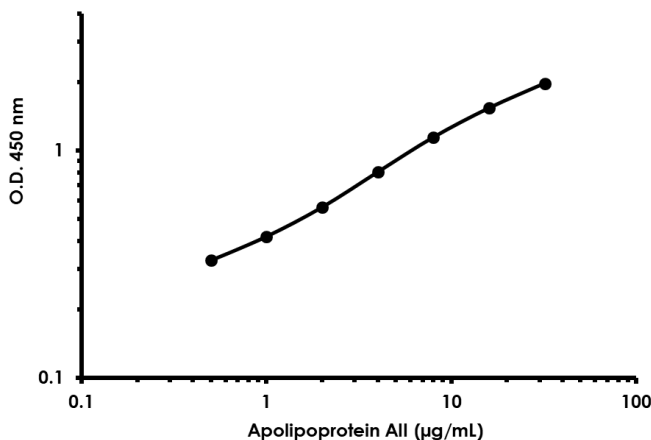
- 13.8 Wash microplate as described above.
- 13.9 Add 50  $\mu$ L of Chromogen Substrate per well. Gently tap plate to thoroughly coat the wells. Break any bubbles that may have formed. Cover wells with sealing tape and incubate in ambient light for about 30 minutes or till the optimal blue colour density develops.
- 13.10 Add 50  $\mu$ L of Stop Solution to each well. The color will change from blue to yellow. Gently tap plate to ensure thorough mixing. Break any bubbles that may have formed.
- 13.11 Read the absorbance on a microplate reader at a wavelength of 450 nm immediately. If wavelength correction is available, subtract readings at 570 nm from those at 450 nm to correct optical imperfections. Otherwise, read the plate at 450 nm only. Please note that some unstable black particles may be generated at high concentration points after stopping the reaction for about 10 minutes, which will reduce the readings.

### 13. CALCULATIONS

Calculate the mean value of the triplicate readings for each standard and sample. To generate a Standard Curve, plot the graph using the standard concentrations on the x-axis and the corresponding mean 450 nm absorbance on the y-axis. The best-fit line can be determined by regression analysis using log-log or four-parameter logistic curve-fit. Determine the unknown sample concentration from the Standard Curve and multiply the value by the dilution factor.

### 14. TYPICAL DATA

**TYPICAL STANDARD CURVE** – Data provided for demonstration purposes only. A new standard curve must be generated for each assay performed.



## 15. TYPICAL SAMPLE VALUES

### SENSITIVITY –

The minimum detectable dose of Apolipoprotein AII is typically ~0.28 µg/mL.

### RECOVERY –

Standard Added Value: 1 – 8 µg/mL

Recovery %: 82 – 115.

Average Recovery %: 101

### LINEARITY OF DILUTION –

Plasma Dilution	Average % Expected Value
1:40	85
1:80	95
1:160	118

Serum Dilution	Average % Expected Value
1:40	86
1:80	99
1:160	119

### PRECISION –

	Intra-Assay	Inter-Assay
% CV	5.8	10.0

## 16. ASSAY SPECIFICITY

Species	% Cross Reactivity
Canine	10%
Bovine	None
Monkey	20%
Mouse	None
Rat	None
Swine	None
Rabbit	None

Protein	% Cross Reactivity
Apo AV	5%
Apo H	5%

No significant cross reactivity observed with Apo AI, Apo AIV, Apo B, Apo CI, Apo CII, Apo CIII, Apo E, and Apo M.

## 17. TROUBLESHOOTING

Problem	Cause	Solution
Poor standard curve	Improper standard dilution	Confirm dilutions made correctly
	Standard improperly reconstituted (if applicable)	Briefly spin vial before opening; thoroughly resuspend powder (if applicable)
	Standard degraded	Store sample as recommended
	Curve doesn't fit scale	Try plotting using different scale
Low signal	Incubation time too short	Try overnight incubation at 4°C
	Target present below detection limits of assay	Decrease dilution factor; concentrate samples
	Precipitate can form in wells upon substrate addition when concentration of target is too high	Increase dilution factor of sample
	Using incompatible sample type (e.g. serum vs. cell extract)	Detection may be reduced or absent in untested sample types
	Sample prepared incorrectly	Ensure proper sample preparation/dilution
Large CV	Bubbles in wells	Ensure no bubbles present prior to reading plate
	All wells not washed equally/thoroughly	Check that all ports of plate washer are unobstructed wash wells as recommended
	Incomplete reagent mixing	Ensure all reagents/master mixes are mixed thoroughly
	Inconsistent pipetting	Use calibrated pipettes and ensure accurate pipetting
	Inconsistent sample preparation or storage	Ensure consistent sample preparation and optimal sample storage conditions (eg. minimize freeze/thaws cycles)

## RESOURCES

Problem	Cause	Solution
High background/ Low sensitivity	Wells are insufficiently washed	Wash wells as per protocol recommendations
	Contaminated wash buffer	Make fresh wash buffer
	Waiting too long to read plate after adding STOP solution	Read plate immediately after adding STOP solution
	Improper storage of ELISA kit	Store all reagents as recommended. Please note all reagents may not have identical storage requirements.
	Using incompatible sample type (e.g. Serum vs. cell extract)	Detection may be reduced or absent in untested sample types

### 18. NOTES



**For all technical and commercial enquires please go to:**

[www.abcam.com/contactus](http://www.abcam.com/contactus)

[www.abcam.cn/contactus](http://www.abcam.cn/contactus) (China)

[www.abcam.co.jp/contactus](http://www.abcam.co.jp/contactus) (Japan)

Copyright © 2022 Abcam, All Rights Reserved. The Abcam logo is a registered trademark.

All information / detail is correct at time of going to print.